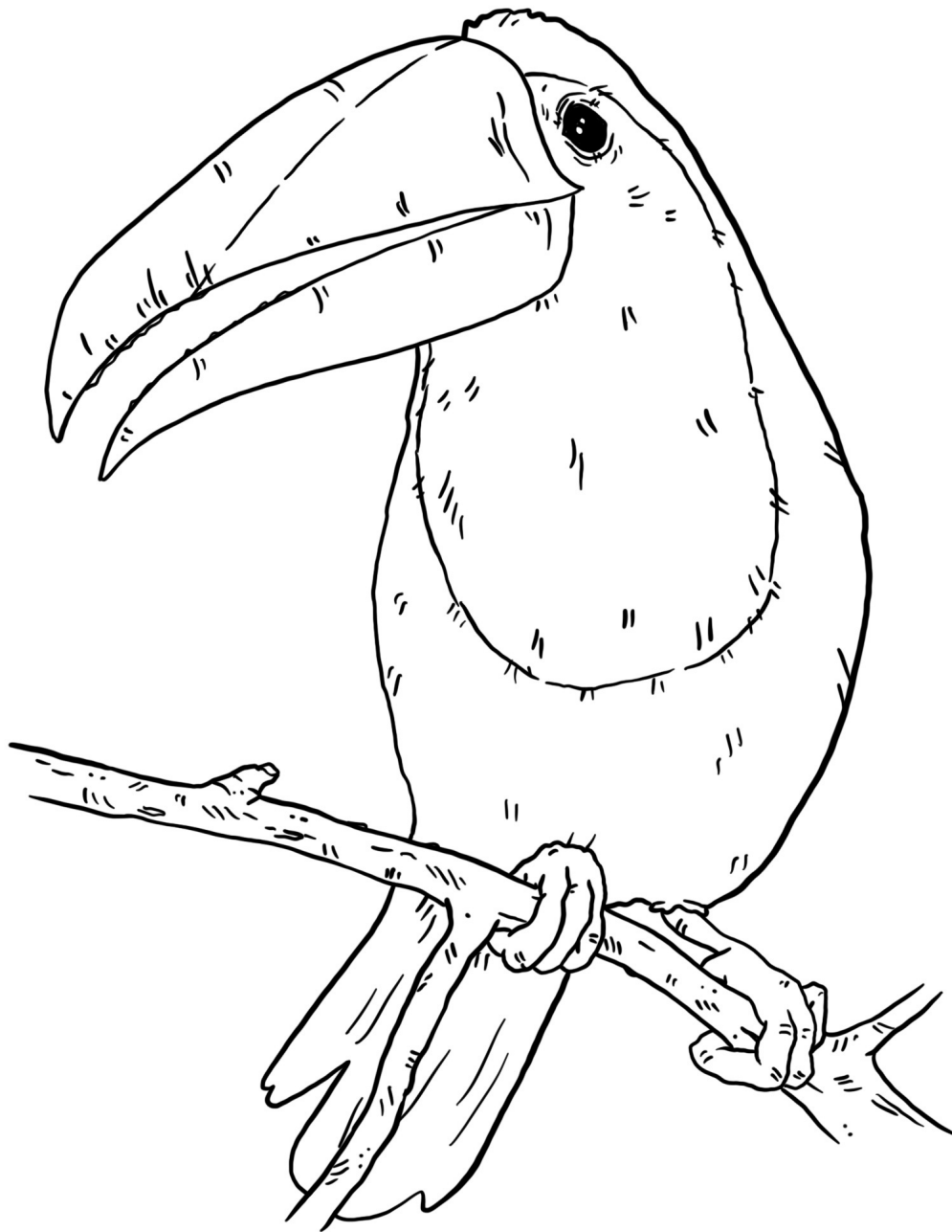


Name: \_\_\_\_\_

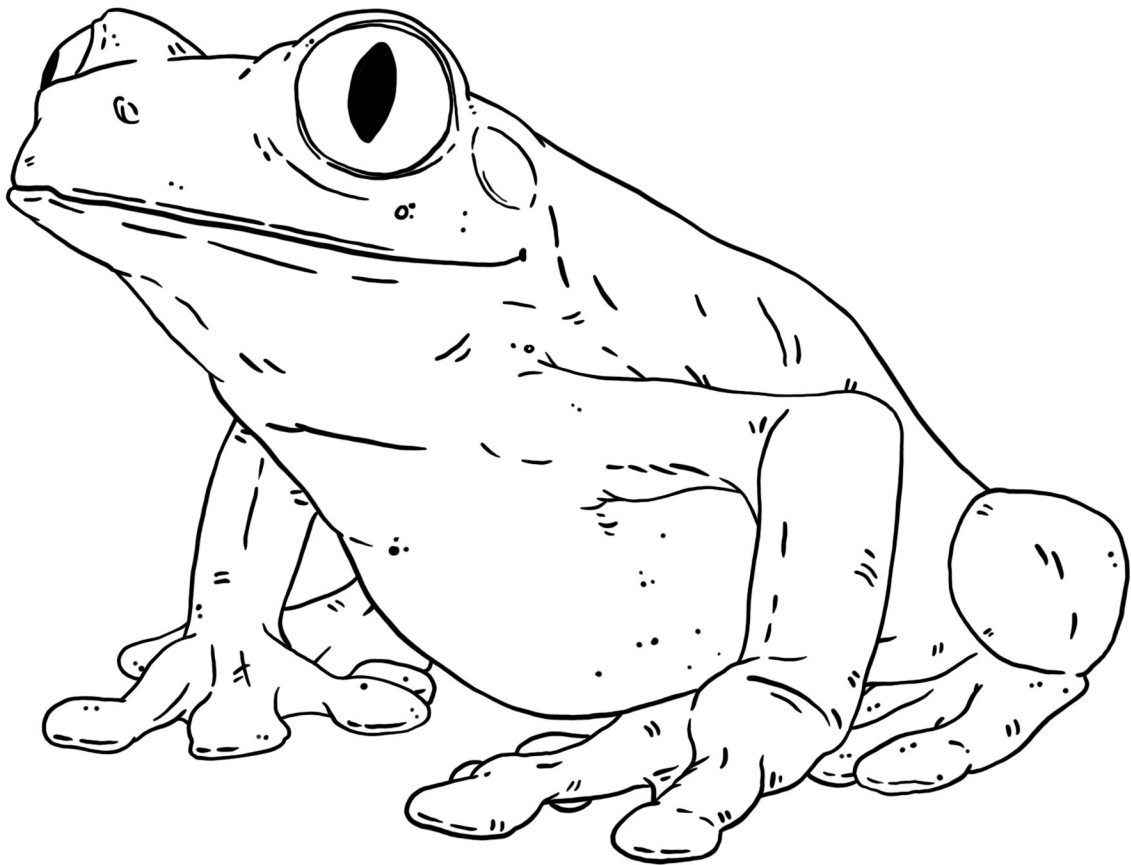
# Toucan



I like to eat figs.

Name: \_\_\_\_\_

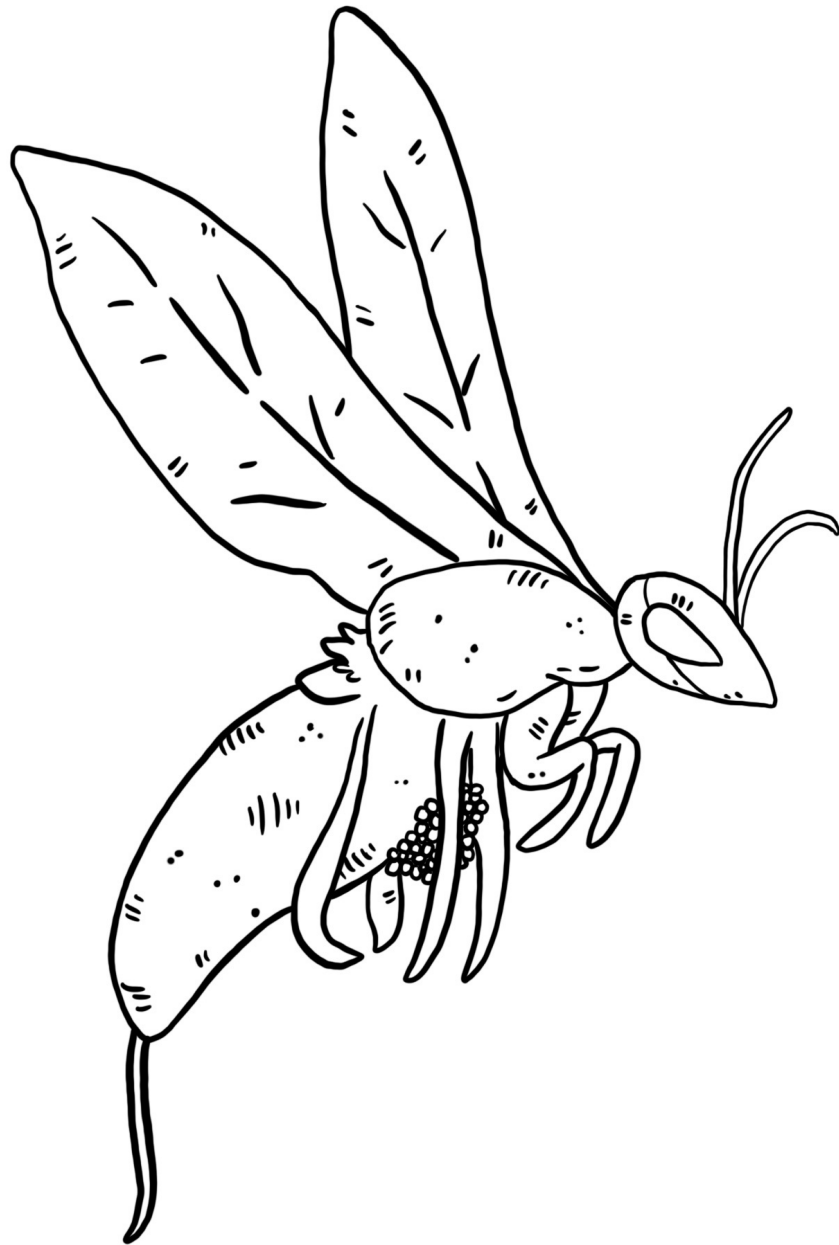
# Red-Eyed Tree Frog



I live in the rainforest.

Name: \_\_\_\_\_

# Wasp



I pollinate fig flowers.

Name: \_\_\_\_\_

# What Do I Do?

Draw a line to connect.

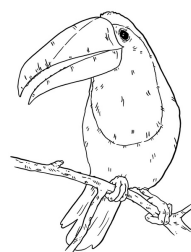
Toucan

I collect fig pollen.



Tree

I eat figs.



Wasp

I grow figs.



Name: \_\_\_\_\_

# What do I need from my environment to live?

Toucan



fig



Wasp



seeds



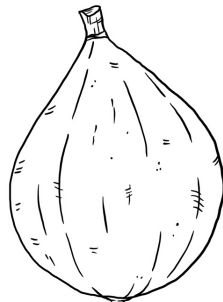
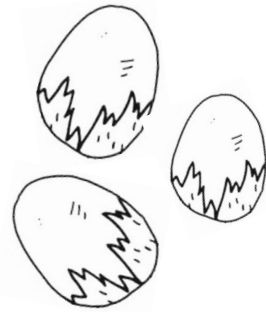
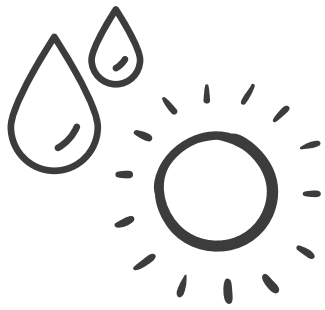
Tree



sun and water



Cut the sun and water, fig, and seeds and glue into the squares where they belong!



Name: \_\_\_\_\_

Date: \_\_\_\_\_



# POLLINATION



## FLOWERS CAN BE POLLINATED BY INSECTS!



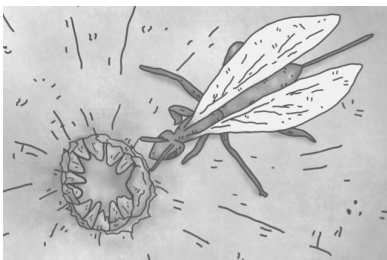
How are fig flowers pollinated in the book  
Something Wonderful?



First, the wasp collects...



Next, she flies...



Then, the wasp enters...



Finally, she dusts...

Name: \_\_\_\_\_

Date: \_\_\_\_\_

# HOW DO SEEDS MOVE?

There are many ways a seed can travel from one place to another—wind, water, or sticking to animals' fur.

How are fig tree seeds moved to new places in the book Something Wonderful?



First, the toucan finds a...





Name: \_\_\_\_\_

Date: \_\_\_\_\_

# What Happens When...?

How do the actions of animals in the forest cause change in the book Something Wonderful?

## Cause

Draw a line from the cause to the effect.

## Effect



Wasps carry pollen from a fig's flowers.

A new fig fruit develops.



Wasps finish pollinating the flowers inside of a fig.

New roots and tree begin to form.



Toucans eat ripe figs with seeds in them.

Wasps pollinate the fig flowers in the next fig they visit.



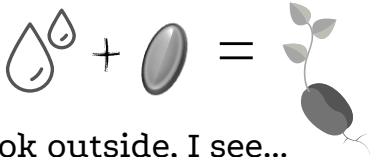
A fig seed falls onto a tree in the forest.

Seeds are spread in the forest when the toucans pass the seeds out.



When you look outside, what other causes and effects do you notice in the environment?

For Example:



When I look outside, I see...

---

---

---

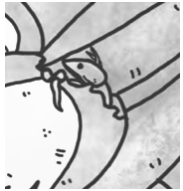
---

Name: \_\_\_\_\_

Date: \_\_\_\_\_

# What are the parts of a life cycle?

Using the wasps in the book Something Wonderful, describe the different parts of a life cycle.



## Birth

First, the baby wasp...



## Growth

Next, the wasp...



## Reproduction

Then, the female wasp...



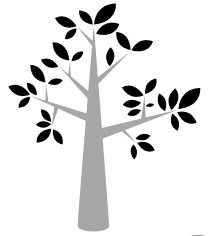
## Death

Finally, when she is done laying her eggs...

Name: \_\_\_\_\_

Date: \_\_\_\_\_

# How does a tree...



Write the life stages of a tree in the boxes below using words from the Word Bank.

# GROW?

Word Bank: seed, germinate, roots, trunk, leaves, flowers, fruit

**First,** a seed falls...

**Next,**

**Then,**

**Finally,**